

For the 24/25 season, Adele Lorenzi will make her debut at the Theater Bremen in the roles of Desdemona of Verdi's *Otello*, Mimi of Puccini's *La Bohème* and Béatrice of Berlioz's *Béatrice et Bénédicte*.

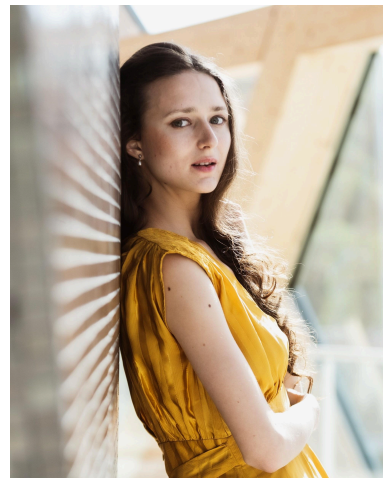
She has performed with orchestras such as the Orchestre Appassionato, the Concert de l'Hostel Dieu, the Chambre Symphonique and the Ensemble Cristofori.

Her recent appearances include *Iolanta* at the Theater Kiel, *Contessa d'Almaviva* at the La Seine musicale, *Mimi* at the ORW, *Annio* and *Nicoletta/Sméraldine* at the Theater Bremen and *Tomiri* at the Abbaye de Royaumont.

She also performs in concert arias such as Beethoven's *Ah perfido!* and Mahler's *Symphony No.4*.

Adele takes part in numerous festivals, including *Alte Musik* in Sankt Gallen, *Les étoiles de Fontevraud*, *Un temps pour Elles*, and sings at the Salle Molière, the Auditorium of the Petit Palais, the Alliance Française and the French Cultural Institute in Berlin.

After graduating from the CNSMD in Lyon, Adele Lorenzi studied at the Universität der Künste Berlin. She alternated her year of study in Berlin with the Philippe Jaroussky Academy, where she was a young talent in the Tchaikovsky class.



#### CONTACT

Oliver Kretschmer  
(Munich Office)

[oliver@tact4art.com](mailto:oliver@tact4art.com)

+49 170 22 30 823

...